

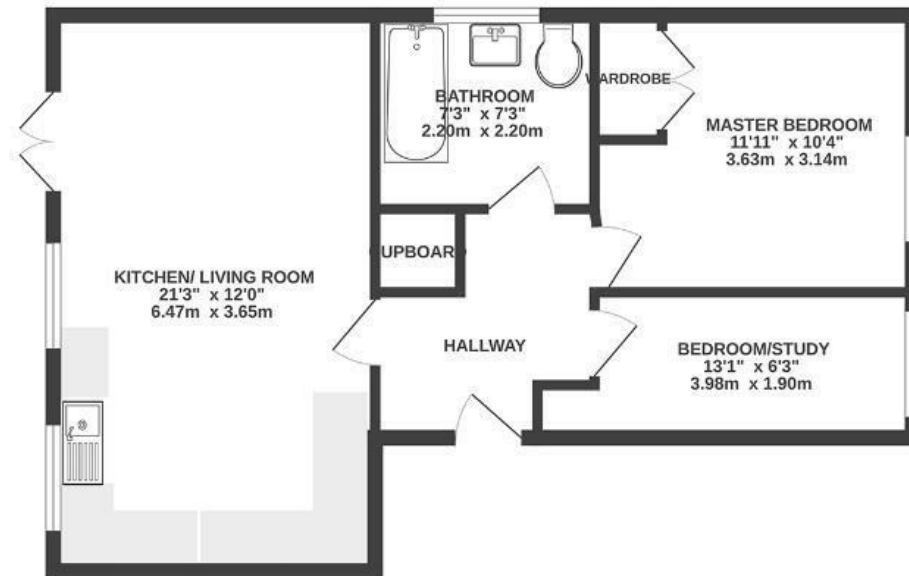
Sturmy Close

BRENTY

APPROXIMATE FLOOR AREA
52.8 SQM / 568 SQFT



GROUND FLOOR
568 sq.ft. (52.8 sq.m.) approx.



Illustrations are for reference purposes only,
measurements are approximate, not to scale.

Boardwalk

Sturmy Close

, BRISTOL

£

£225,000

z^z

2 Bedrooms



BS10 6AA



1 Bathrooms

"One of my favourite things about living here has been the walk to work across the golf course. It's a genuinely good morning commute, especially on a sunny day. Coming home in the evening, the flat always feels peaceful and quiet, tucked back from the road, yet still light and airy - it's been the perfect place to relax. Over the years, I've also become good friends with the neighbours. I'm only moving down the road, but I'll genuinely miss living here!"

